



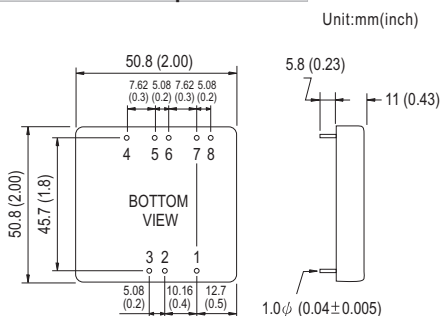
- Features :
  - 2:1 wide input range
  - High efficiency up to 92%
  - 1500VDC I/O isolation
  - Built-in EMI filter
  - Built-in remote ON / OFF control
  - Built-in remote sense
  - Trimming output  $\pm 10\%$
  - Protections: Short circuit / Overload / Over voltage
  - Cooling by free air convection
  - Six-sided shield metal case
  - 100% burn-in test
  - Low cost / High reliability
  - Output 3.3V/9V available
  - Approvals: FCC / CE
  - 2 years warranty



## SPECIFICATION

ORDER NO.	SKA40A-05	SKA40B-05	SKA40C-05	SKA40A-12	SKA40B-12	SKA40C-12	SKA40A-15	SKA40B-15	SKA40C-15	
OUTPUT	DC VOLTAGE	5V			12V			15V		
	CURRENT RANGE	0.7 ~ 7A			0.3 ~ 3.33A			0.26 ~ 2.67A		
	RATED POWER	35W			40W			40W		
	RIPPLE & NOISE (max.) Note.2	60mVp-p			80mVp-p			100mVp-p		
	LINE REGULATION Note.3	$\pm 0.5\%$								
	LOAD REGULATION Note.4	$\pm 0.5\%$								
	VOLTAGE ACCURACY	$\pm 2.0\%$								
	SWITCHING FREQUENCY	200KHz min.								
	EXTERNAL CAPACITANCE LOAD (max.)	1000uF								
EXTERNAL TRIM Adj. RANGE(Typ.)	$\pm 10\%$									
INPUT	VOLTAGE RANGE	A: 9 ~ 18VDC B: 18 ~ 36VDC C: 36 ~ 75VDC								
	EFFICIENCY (Typ.)	91%	92%	91%	90%	90%	88.5%	90%	90.5%	90%
	DC CURRENT	Full load	A: 3850mA B: 1900mA C: 1000mA							
	No load	A: 150mA B: 100mA C: 65mA								
	FILTER	Pi network								
REMOTE CONTROL	Power ON : R.C ~ -Vin > 2.5VDC or open circuit ; Power OFF : R.C ~ -Vin < 0.5VDC or short									
PROTECTION	Fuse recommended									
PROTECTION (Note. 5)	OVER CURRENT	110% ~ 180% rated output power Protection type : Hiccup mode, recovers automatically after fault condition is removed								
	SHORT CIRCUIT	All output equipped with short circuit Protection type : Hiccup mode, recovers automatically after fault condition is removed								
	OVER VOLTAGE	5Vo : 7V ~ 8.95V ; 12Vo : 15V ~ 19.2V ; 15Vo : 18V ~ 23.3V Protection type : Clamp by TVS diode								
ENVIRONMENT	WORKING TEMP.	-40 ~ +80°C (Refer to output load derating curve)								
	WORKING HUMIDITY	20% ~ 90% RH non-condensing								
	STORAGE TEMP., HUMIDITY	-55 ~ +105°C, 10 ~ 95% RH								
	TEMP. COEFFICIENT	$\pm 0.03\% / ^\circ\text{C}$ (0 ~ 50°C)								
	VIBRATION	10 ~ 500Hz, 2G 10min./1cycle, period for 60min. each along X, Y, Z axes								
SAFETY & EMC	WITHSTAND VOLTAGE	I/P-O/P: 1.5KVDC								
	ISOLATION RESISTANCE	I/P-O/P: 100M Ohms / 500VDC / 25°C / 70% RH								
	EMC EMISSION	Compliance to EN55022 Class A, FCC part 15 Class A								
OTHERS	EMC IMMUNITY	Compliance to EN61000-4-2,3,4,5,6,8, light industry level, criteria A								
	DIMENSION	50.8*50.8*11.0 mm or 2**2**0.43" inch (L*W*H)								
	WEIGHT	60g								

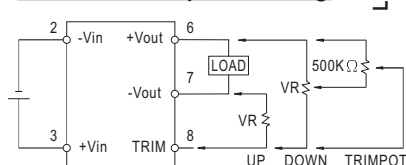
### Mechanical Specification



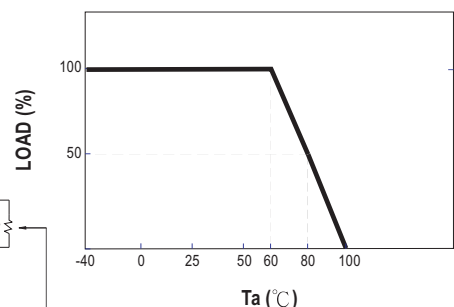
### Pin Configuration

Pin No.	Output	Pin No.	Output
1	R.C	5	+R.S
2	-Vin	6	+Vout
3	+Vin	7	-Vout
4	-R.S	8	TRIM

### External Output Trimming



### Derating Curve



### NOTE

- All parameters are specified at normal input, rated load, 25°C 70% RH ambient.
- Ripple & noise are measured at 20MHz by using a 12" twisted pair terminated with a 0.1uF & 47uF capacitor.
- Line regulation is measured from low line to high line at rated load.
- Load regulation is measured from 10% to 100% rated load.
- Please prevent the converter from operating in overload or short circuit condition for more than 30 seconds.

# Mouser Electronics

Authorized Distributor

Click to View Pricing, Inventory, Delivery & Lifecycle Information:

[Mean Well:](#)

[SKA40A-05](#) [SKA40A-12](#) [SKA40A-15](#) [SKA40B-05](#) [SKA40B-12](#) [SKA40B-15](#) [SKA40C-05](#) [SKA40C-12](#) [SKA40C-15](#)